



PRO LOGISTICA

A ground Based Solution for On-Board Sales Operations



Logica, an approved partner of NOVO, is one of the largest IT service companies in Scandinavia. Their strength lies in their unique ability to apply a combination of expertise in the customer's industry and a complete range of IT services, software, and hardware to deliver solutions that improve their customers' competitiveness.

Logica also have world class expertise in applying technologies such as internet, mobile and geographic information technology. Their headquarters in Helsinki, Finland are located in the home of leading I.T. Logica employ nearly 2000 professionals and have offices in Estonia, Germany, the Netherlands, the UK, the USA, and the People's Republic of China.

The Logica 'Pro Logistica' back-end solution is fully compatible with Novo's 'SkyPOS' front-end software package, as demonstrated by the multitude of successful installations for the World's leading airlines.

PRO LOGISTICA

In the competitive environment of the passenger transport industry the constant challenge is how to differentiate and create a truly competitive edge. Customer satisfaction and corporate image are crucial. Differentiation is becoming increasingly difficult and even the smallest detail, in the process of producing positive experiences for passengers, is essential.

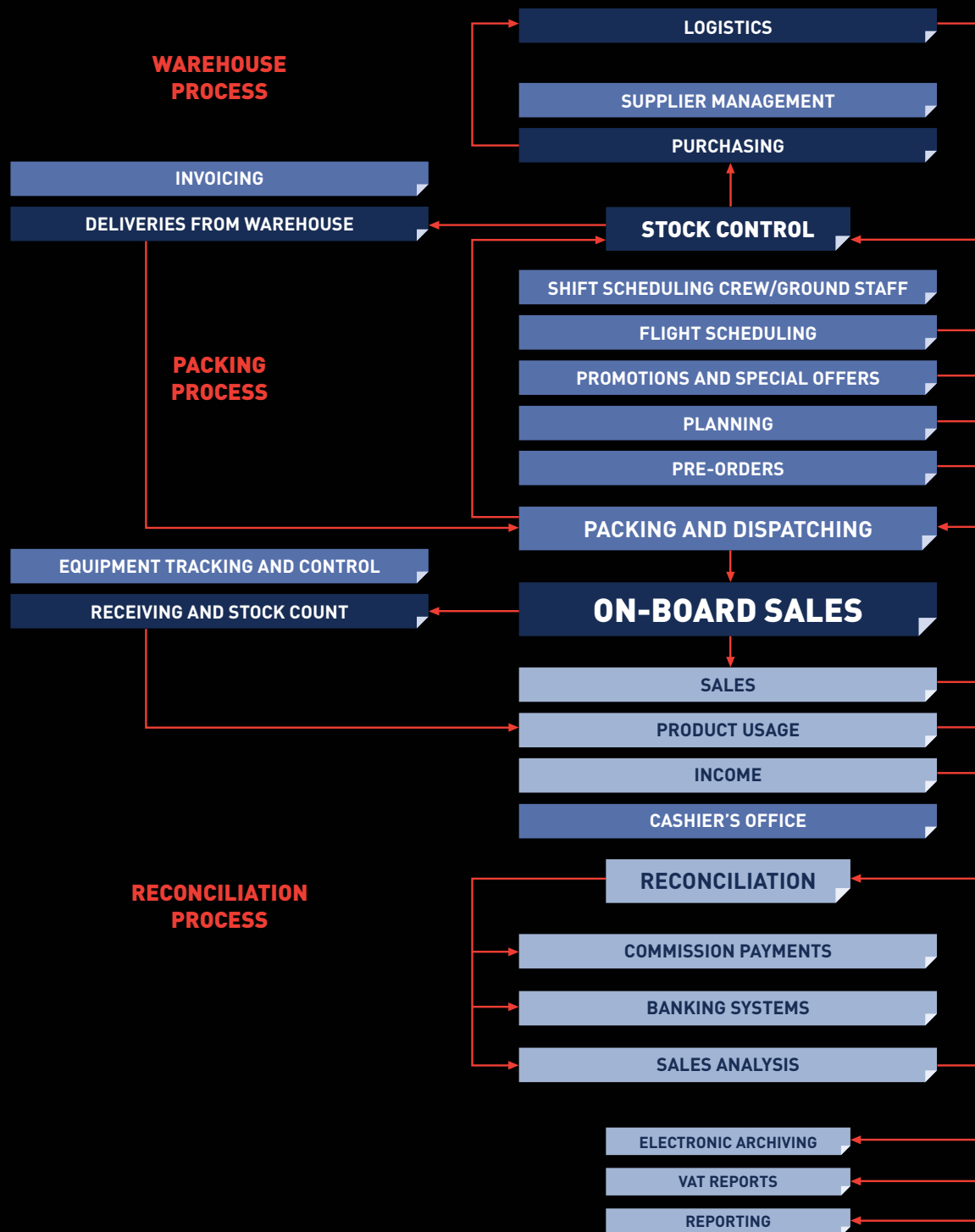
Pro Logistica is a ground system designed to support and streamline the entire on-board sales ground process. It is an effective tool for on-board sales planning, warehouse and packing process management, logistics, accounting, reconciliation and sales analysis. Pro Logistica enables accurate operation, increase in productivity and efficiency.

The solution is extremely flexible and scalable. It supports an unlimited fleet size, numerous bases of operations and a multi-airline environment, as needed by concessionaires.

The modular architecture guarantees flexible, fast, requirement based implementation. Pro Logistica is also easy to integrate with the transport operator's legacy planning, on-board sales and resource management, as well as third party systems.

Pro Logistica complements Logica's integrated on-board point-of sale solution, now used by more than 40 leading airlines all over the world. Logica's point-of-sale solution includes the point-of-sale functions, data transfer facilities from and to the ground system as well as point-of-sale terminals and peripherals.

Pro Logistica also fully supports computerised operations with a separate connectivity module, which can be used by either the ground or reconciliation staff or the crew. By using an integrated package any information once entered into the system is readily available to other users and functions thus reducing the amount of work needed to maintain a world-class operation.



RELIABLE LEADING EDGE TECHNOLOGY

The technological change continues to accelerate. This creates a true threat for all those seeking continuity for the solutions as well as positive ROI for their IT investments. Pro Logistica has been developed keeping these crucial requirements in mind. It is simple, reliable and fast to use. Flexible fitting for customer specific processes and requirements, and open, standardised system architecture and technologies used have been the guiding principles in the development of Pro Logistica.

TECHNICAL REQUIREMENTS

Client

Operating System: MS XP, Windows7

Server

Operating system: Windows Server 2003 RD or newer version.

Database: SQL Server 2005/2008

FEATURES

- › Graphical user interface
- › Scalable
- › Modular
- › Warehouse, Packing and Reconciliation modules can be flexibly interfaced with other operative systems
- › Caters for customer specific and ad-hoc reporting
- › Separate Operational and Reporting databases
- › Easy to use
- › Highly configurable
- › Consistent user interface and logical process flow throughout the whole package
- › Fast data processing
- › Fast reconciliation, especially for computerised flights
- › Reliable
- › Comprehensive audit trail support

DYNAMICS AND ACCURACY FOR YOUR ON-BOARD SALES MANAGEMENT AND OPERATIONS

MANAGEABLE SCALABILITY THROUGH WELL-THOUGHT-OUT MODULARITY

Pro Logistica's modular structure ensures flexible implementation in-line with customer requirements and resources. Pro Logistica includes three operative modules: Warehouse, Packing and Reconciliation.

The Data and System Administration module is common for all operative modules. The POS Interface is also a separate module to enable ground or backoffice staff, or even crew, to handle that part of the process.

WAREHOUSE

The Warehouse module is designed to control and manage warehouses, which provide sales items for packing areas supporting sales operations. Pro Logistica supports multiple warehouses as well as multiple warehouse locations and units.

Warehouse module includes the following features and functions:

- » Warehouse settings
- » Warehouse layouts
- » Quality classifications
- » Waybill types and numbering
- » Supplier and customer contact information
- » Purchasing
- » Shipment receiving to warehouse
- » Shipping from warehouse
- » Transfers inside the warehouse, between warehouses and to packing area(s)
- » Stock control with stock-take
- » Analysis functions
- » Reporting

PACKING

The Packing module is designed for the barset, trolley and tray packing. Pro Logistica supports multiple packing areas and several different packing methods.

Packing module functions:

- » Packing plan maintenance
- » Packing unit maintenance (barsets, trollies, Atlas boxes and trays)
- » Waybill types and numbering
- » Receiving
- » Checking
- » Equipment tracking
- » Analysis functions
- » Reporting

RECONCILIATION

The Reconciliation module is for the calculation and production of financial data based on sales transactions received from on-board operations. As the system makes both computerised and manual on-board sales methods possible in the same installation, the data produced with both methods is handled similarly in reconciliation functions.

The reconciliation functions include:

- » Pending flights list
- » Flight route confirmation / analysis including crew handovers
- » Crew management
- » Stock counts from packing and on-board operations
- » Receipt analysis
- » Income analysis including cash, cards and vouchers
- » Flight summary calculation and analysis including
 - + Income adjustment
 - + VAT
 - + Cash and inventory discrepancies
 - + Commissions
 - + Discrepancy allocation and confirmation
 - + Flight suspension
- » Reconciliation confirmation
- » Analysis
- » Reports

The system will produce various output files including card payments and crew commissions.

DATA AND SYSTEM ADMINISTRATION

The Data and System Administration module allows the user to set the system up.

The following datasets are managed:

- » Basic system settings including owner / operator information
- » Countries
- » Airports
- » Warehouses
- » Packing Areas
- » Tax groups
- » Product groups
- » Sales groups
- » Financial Periods
- » Airlines and crews
- » Currencies
- » Credit cards, Debit cards, Loyalty cards etc.
- » Products and sales groups
- » Equipment (POS terminals, trollies, Atlas boxes etc.)
- » Tax percentages by country / airport
- » User profiles including ready made user groups

Flight management functions are grouped together separately as they form part of the operation, but the usage depends on the modules in operation and legacy systems interfaced.

The following functions are included:

- » Route management
- » Leg management
- » Flight Scheduling
- » Crew messages by flight and by date
- » Ad hoc flight creation





Number Seven, Clarendon Place,
Royal Leamington Spa,
Warwickshire, CV32 5QL, UK

+44(0) 1926 831 173
mail@novoivc.com
www.novoivc.com

